

tinklertastic

Designed and hand-made in Winchester

Contemporary glass wall art



These bespoke fused glass wall panels look stunning in living rooms, offices and hallways.

The glass does not fade in strong sunlight and so is ideal for conservatories and is suitable for areas with condensation such as kitchens and bathrooms.

I individually design and hand-make them to order, working in collaboration with the client,

incorporating colour schemes and themes.

The following pages are a guide to help with the initial planning for your commission.



Kings Worthy Studio

When you are ready to proceed, please contact me to arrange a design briefing.

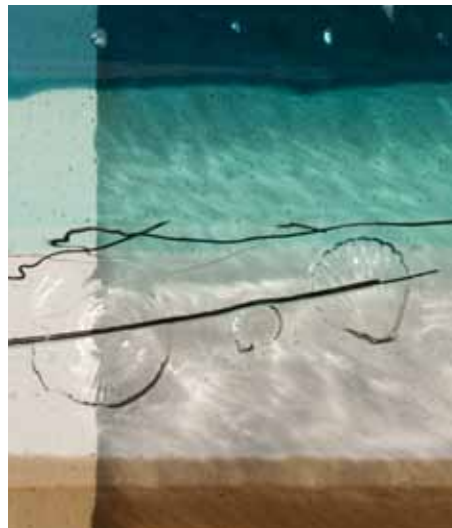
If you have any queries please don't hesitate to get in touch.

sue@tinklertastic.co.uk 077 629 28771

www.tinklertastic.co.uk



Woodland leaves



Jurassic coast

Chalk stream

tinklertastic

The design process - example of a recent commission
Clients are consulted at each stage to ensure the finished piece of glass art is just right.



1 Clients' furnishings and paint swatches



3 Glass prepared for firing in the kiln. Clients can see the artwork and adjustments can still be made to the design at this stage.

tinklertastic
Sue Tinkler tel: 077 629 28 771
sue@tinklertastic.co.uk
www.tinklertastic.co.uk

based on this design leaf shapes and colours to match curtains and other soft furnishings

Transparent glass	oregon gray 1449	khaki 1439	light bronze 1409	light silver grey 1429	fuchsia 1332	Rhubarb Tint 1858	Grey Tint 1829
Opaque glass	driftwood grey opal	lt peach cream opal 0034	deco grey opal 0136	small pieces of blue dichroic glass	copper with lines scribed into surface	embossed leaves	

leaves in shapes on curtains

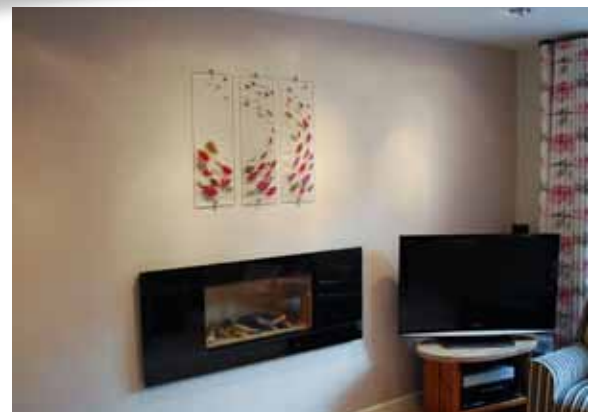
2 Design visual and colour palette



4 Glass panel after firing

"thanks again for the excellent work on our three panels - we are very pleased with the outcome"

Peter



5 Installed



Commissioning

I understand that commissioning an artist may be a daunting experience. Rest assured that you will be involved in each step of the design process to ensure that end result is to your liking.

Step 1 - Preparation

Decide on the size and format you would like - eg long, thin, triptych, square etc. The following pages - as well as the portfolio on my website may help you decide on your design. You may find it helpful to place pieces of paper cut to size on the wall to gauge the scale correctly.

Gather together reference material such as paint and fabric swatches, samples of furnishings along with photos of the desired location and any inspirational imagery that you may wish to be incorporated into the design.

Step 2 - The design process

Contact me to arrange a time to meet. If this is not practical, we can communicate via phone and email.

At the briefing, we will discuss the design of your commission and select from a wide range of glass swatches and design options.

I will put together a design proposal on computer and email you a PDF file for your approval. Once you are happy with the design and would like to proceed - you will be asked to pay a 50% deposit.

Step 3 - Making

On receipt of the deposit I will make a start on making your commission. This takes about 1-3 weeks if I have the glass you have selected in stock. Before firing in the kiln, I can email you a photo of your artwork for approval - alternatively you can come to my studio and see the artwork set up in the kiln. Some clients welcome the opportunity to get even more involved by adding the finishing touches.

Once you are satisfied with the design, I will fire the glass in the kiln. This process takes approx 24 hours to ensure that the glass is annealed. I will contact you when the glass is ready for collection at which point the remaining 50% payment is due.

Step 4 - Installation

The wall panels come with high quality metal wall mounts.

These are quite easy to install, you will need to drill a hole, fit a raw plug then screw on the brass fixing. The silver part simply screws on top. Final adjustments can be made with allen keys.

Alternative methods of hanging the glass are available.



Samples of furnishings and colour theme



Photo of location



Example of design proposal



Finished artwork



Wall mounts

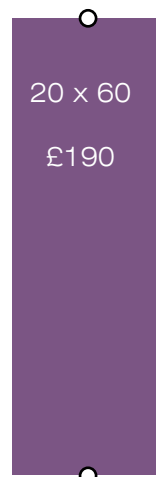
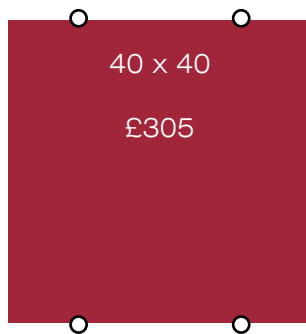


Size guide

These are popular sizes (in cm), other sizes and shapes available - prices on request.

Currently max size 900mm x 420mm in a single piece. (Larger size available from summer 2012)

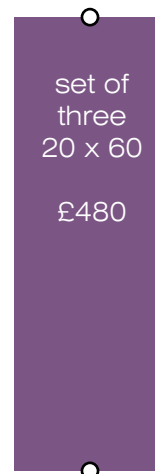
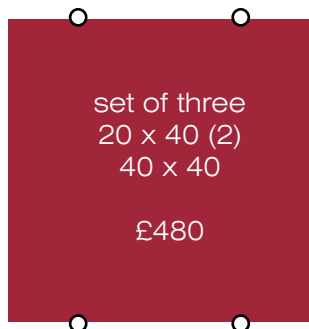
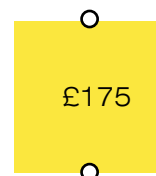
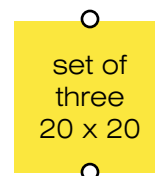
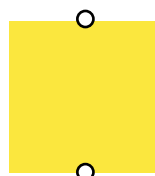
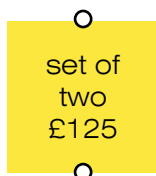
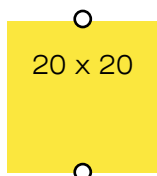
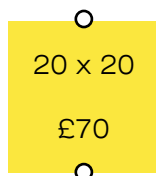
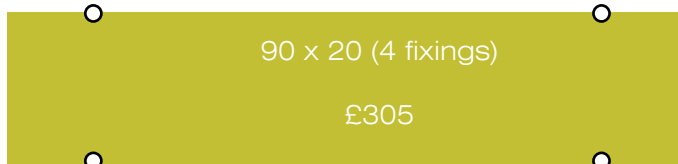
TIP: - cut pieces of paper to these dimensions - position on the walls to get feel for the most suitable size.



Guide prices

These are guide prices and may vary depending on design and colours selected.

Fixings included. Delivery extra.





Glass colours

* Please note colours are approximate, we can match your paint and fabric samples with fired glass samples. Opaque glass also available.



marigold yellow
1320



yellow striker
1120



chartreuse
1126



spring green
1426



fern green
1207



pine green
1241



light green
1107



olive green
1141



kelly green
1145



light aventurine green
1412



emerald green
1417



aventurine green
1112



aqua marine blue
1108



light aqua marine
1408



light turquoise blue
1416



turquoise blue
1116



sea blue
1444



true blue
1464



steel blue
1406



deep royal blue
1114



midnight blue
1118



aventurine blue
1140



Deep royal purple
1128



Gold purple
1334



light sky blue
1414



neo-lavender shift
1442



violet striker
1234



deep plum
1105



light plum
1405



light violet
1428



light pink striker
1215



fuchsia
1332



tan
1419



light coral striker
1205



cranberry pink
1311



Garnet red
1322



Red striker
1122



Orange striker
1125



sunset coral
1305



camelian
1321



light orange striker
1025



light amber
1437



medium amber
1137



sienna
1119



dark rose brown
1109



oregon gray
1449



khaki
1439



light bronze
1409



light silver grey
1429

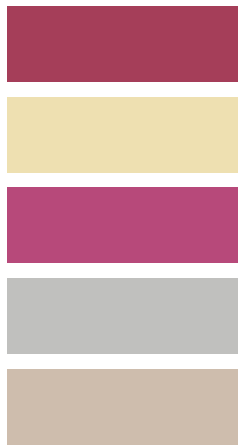


charcoal grey
1129

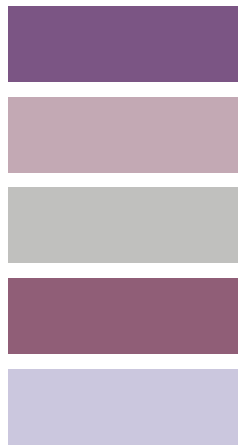


Swatches

The glass can be fused together in any number of combinations to match in with your own colour schemes and accent colours. The swatches shown here are based on transparent glass, there is also a wide selection of opaque and special effect glass available. Here are a few sample colour swatch combinations.



swatch 1



swatch 2



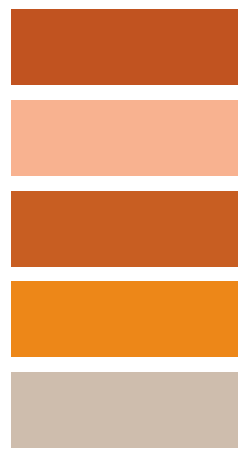
swatch 3



swatch 4



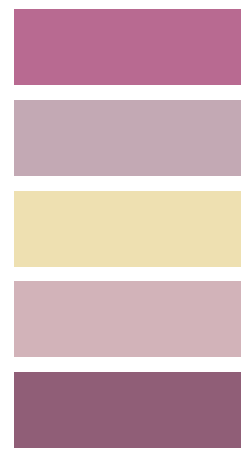
swatch 5



swatch 6



swatch 7



swatch 8



swatch 9



swatch 10



swatch 11



swatch 12

Commission example 1

'Abstract water' kitchen splashback

The visuals - 3 options



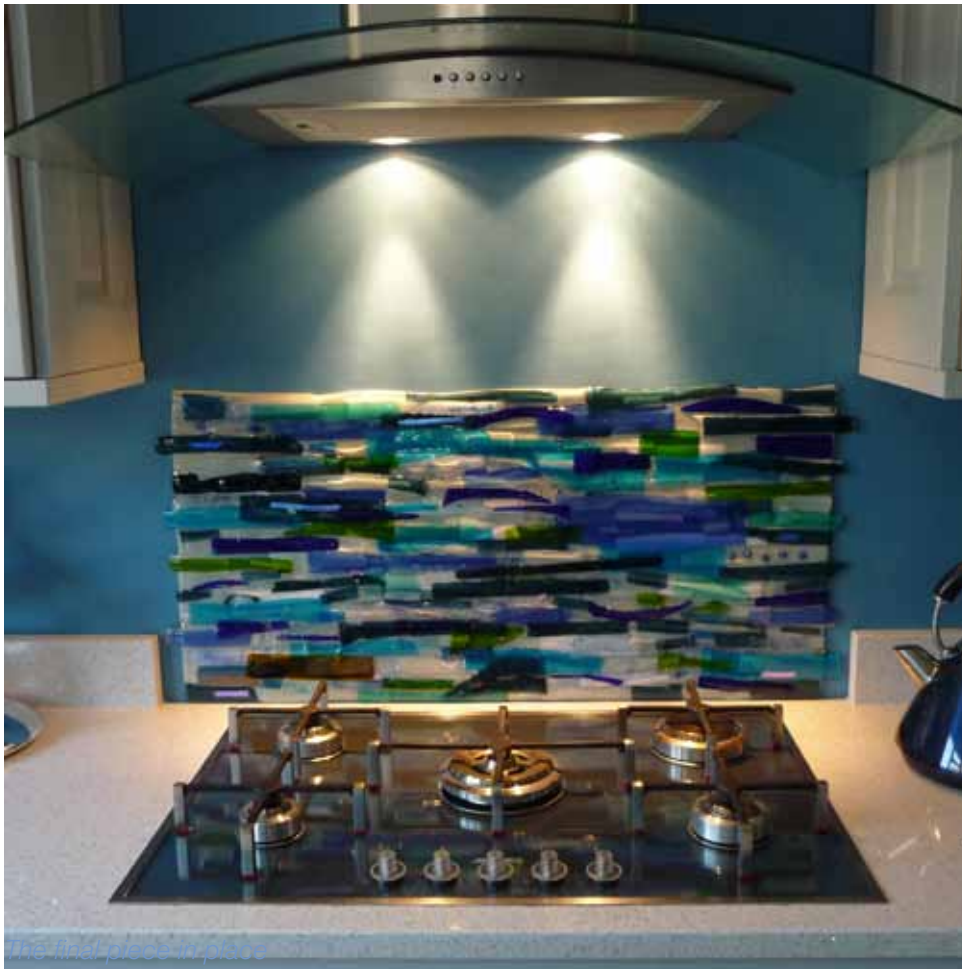
Option 1 straight edge



Option 2 curved top to mirror hood shape



Option 3 straight bottom edge but irregular edge left, right



The final piece in place

The client had recently installed a new kitchen and had been waiting to find the right kind of splashback. This is made using an opaque glass as the base so that the adhesive could not be seen through the glass. After considering different design options, Helen decided to go for the option with the irregular edge - the glass extends both left and right beyond the main piece.



Coloured glass was carefully selected to match existing accessories. This piece was fired at

a lower temperature to retain the textured finish, a smoother surface can be achieved by melting the glass at a higher temperature if preferred.

"Hi Sue, as you can see the splash back is in place and looks magnificent. We all love it and can't stop touching it. Lots of friends have commented on it, and we feel it really finishes the kitchen off beautifully. Thanks so much"

Helen

tinklertastic

Commission example 2 - Living room triptych abstract horizontal design



The design works across all three panels - the eye visually makes the links between the spaces. This effect can be achieved with two or more panels (see other pages for examples)



"Sue did a great job matching the colours and design to my design brief – A fantastic addition to my lounge!"

Neil

Commission example 3 - Bathroom panel

Glass panels are ideal for bathrooms and kitchens where there may be condensation . The design shown here has shells and ammonites 'embossed' into the glass - especially effective with a strong directional light to emphasise the hi-lights and shadows of the 3D shapes. In this example I created a silver border using dichroic glass to tie in with the clients' bathroom tiles.



"The silver edging matches beautifully with the edging of our bathroom tiles and we think really frames the design beautifully. We are delighted with our bespoke design and enjoy the cheerful colours and lovely textures."

Debra & Keith

tinklertastic



Commission example 4

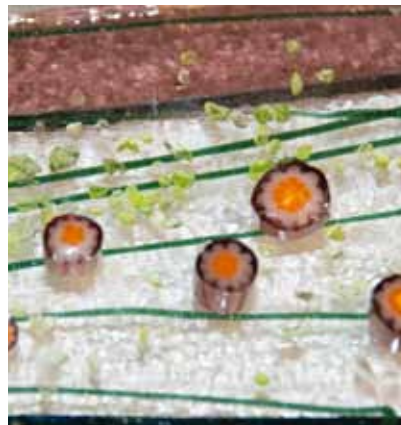
'Chalk stream' window hanging

The client was keen to hang the glass panel in front of the window so that the sun light shines through the glass. This was possible using different fixings. The glass panel was fitted into an aluminium strip which was held in place using tension cables fixed to the ceiling and window sill.

For this commission, the client visited the studio just before the panel was fired in the kiln and contributed to the design by adding the final touches such as the millifiori (flowers), stringers (wiggly bits) and frits (granules).



"We are delighted with our unique, beautiful, glass panel. Sue helped us to choose colours that would work in our room and with each other. She spent a long time showing us other pieces and talking to us about what we liked so that we felt confident that she knew what we wanted." Teresa



Design before firing in the kiln

tinklertastic

Commission example 5

Kitchen - triptych and splashback

This is a triptych design (three panel)

With three panels it is possible to be playful with the design. By visually linking them together - in the example shown here the leaves appear to have been blown by the wind across the panels.



Having seen some of Sue's work at a craft fair in Winchester we got in touch and she came out to see the kitchen and discuss possibilities; drawing on the colours and shapes of the small Acers outside the kitchen window. She generated ideas, incorporated feedback and accommodated preferences and changes. The design felt like a collaborative effort. Sue delivered what she said she would, when she said she would, at every stage. A good result, from an enjoyable process."

Steve